



The Storage Assessment team offers several assessment services to meet your needs as well as services that enable you to improve the performance of all open systems, application and databases.

Our ARID Best Practices model continues to distinguish us from others:

### Analyze

- Savvy with all SRM (Storage Resource Management) tools
- Visualize production and operation data through the lenses of ILM (Information Lifecycle Management)

### Recommend

- New standards, architecture and technology based on business need, RTO and RPO.

### Implement

- Transparent approach to infrastructure cut-over by leveraging "HOT" moves and virtualization strategies

### Deliver

- Informative relationship with environment owners on data high availability assurance

Following a successful assessment of a Storage Area Network infrastructure, our SME will recommend solutions and engage in the following areas to improve performance, management and administration:

### Implementation & Delivery

- Architecture - capacity planning & sizing, bandwidth sizing
- SAN - arrays, fabrics
- NAS - filers, gateways, fabrics

### Business Continuity

- Remote Data Replication
- Disaster Recovery - plan & test
- Disaster Recovery - failover, failback

### Storage Administration

- Storage Operation - provisioning, storage tiering
- Data Protection - encryption, backup & recovery
- Information Lifecycle Management - capture, classification, re-classification
- Storage Optimization - consolidation, virtualization
- Storage Resource Management - Tuning, Quality of Service (QoS)



### **New York 3,100-Bed Hospital Group**

The total operating cost of this Healthcare Partnership is about \$2.1 billion. With our extensive and comprehensive knowledge of HIPAA, FDA regulation and certifications, CDS hit the ground running with storage re-architecture, consolidation and data migration from EMC Symmetrix to IBM DS8300. We saved this Hospital Group over \$1,850,000 in operational and infrastructural budget over one and half years. Operational downtime cost has since been reduced by 94%.

### **Chicago Based Insurance Company**

CDS demonstrated storage vendor agnostic expertise in this datacenter move from downtown Chicago to Aurora IL. CDS came in and took leadership in the data storage aspect of the datacenter move. We leveraged our thorough understanding of both server and storage sides of the enterprise in migrating hundreds of terabytes of data from old Symmetrix to new EMC DMXs in a 96% AIX UNIX environment. We configured and started EMC SRDF replication and over 90% in storage capacity and business continuity managed services costs have been recorded and maintained

### **Manufacturing Company in Albuquerque, NM**

CDS planned and implemented the first SAN for this manufacturer. Based on the assessment of the customer's environment, the innovation and recommendation we brought in were to have all hosts boot from an IBM SAN. Our involvement here was from start to finish - rack, stack, implement, configure, provision, deliver the IBMDS4800 SAN and IBM H Class Blade Chassis environment. Storage utilization and management has been kept under control. Ease of management and low storage budget has since been maintained at this customer environment

10/23/2011



### **County Public School System, GA**

The following gains resulted from CDS' successful implementation of the IBM SVC for the storage environment at this Public School System of GA:

85% reduction in storage operation time

90% reduction in multi-vendor storage related licensing

52% reduction in annual storage infrastructural maintenance budget

Over \$150,000.00 per year in power savings

### **Financial & Credit Card Settlement Company, Roswell, GA**

Storage Virtualization achieved by externalization - CDS expertise in virtualization by externalization of two (2) HP EVA8100, two (2) Hitachi USP, six HP MSA1500, behind a Hitachi USPV. Customer's environment was improved by:

Over \$800,000.00 annual savings in multi-vendor replication and SRM tool

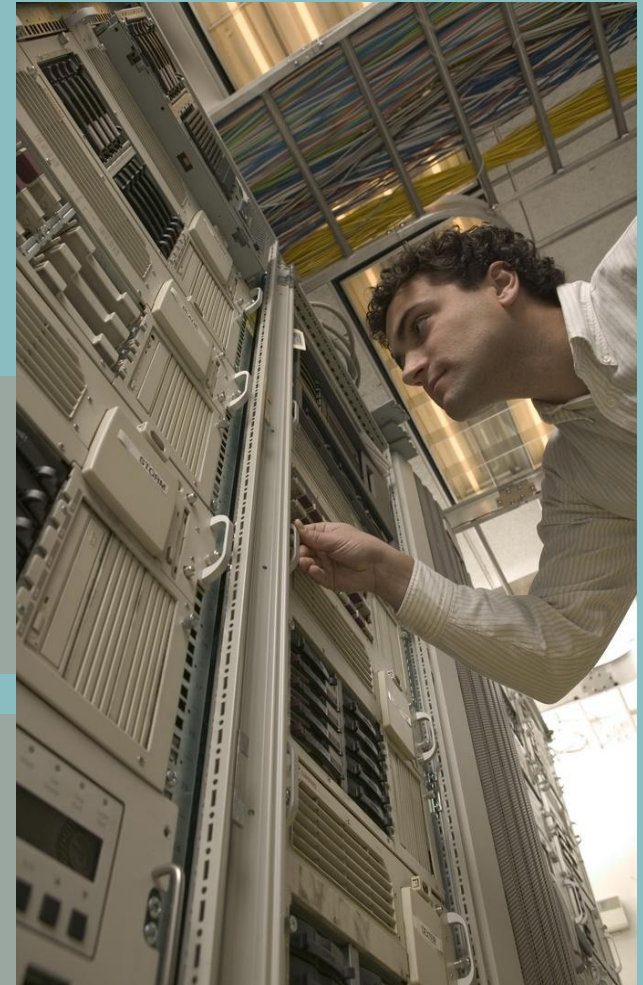
73% increase in storage computing capacity

Ease of management achieved from Thin Provisioning and Zero Page Reclaim

### **IT Department at a large bank, Sandy Springs, GA**

Storage assessment of the Host, Fabric and Storage Controller layers. A thorough assessment of the customer's storage infrastructure, tuning and re-architecture of both fabric and storage controller layer brought about:

88% increase in response time



■ **Tracy Sprowls** - Business Development Executive

Consolidated Data Storage

2475 Northwinds Parkway, Suite 200

Alpharetta, GA 30009

Phone: 1-888-632-3762 Extension 102

URL: [www.cdsna.com](http://www.cdsna.com)

Email: [Tracy.Sprows@cdsna.com](mailto:Tracy.Sprows@cdsna.com)